

Committed to Excellence



Our Company

PSDESIGN was established in 1997 as a steel detailing company.

We rapidly grew to our current strong position within the industry, providing detailing, connection design, multi-discipline engineering, mechanical piping design and civil/structural design.

Combined we bring many years of expertise to the Engineering, Design and Steel Detailing industry.

We are equipped with a talented staff that will plan, layout, coordinate, and engineer the most complex structures from conception through detailing, fabrication, and construction.



Employment

Interested in joining our team of experts in design for heavy industry?, contact us by the phone or visit us on our website. We look forward to hearing from you.

15171 S. Harrell's Ferry Rd.
Baton Rouge, LA 70816
www.psdesigneng.com 225.756.8629 admin@psdesigneng.com

◆ *designingforthe*FUTURE

Multi-discipline Engineering

Our civil/structural engineers have numerous years of experience in the development of projects, which commence with site feasibility studies and follow through with site development and design of foundations, structures, and buildings.

Specific areas of expertise include:

Surveying
Site Development
Civil/Structural Engineering and design
Process Controls Engineering
Mechanical/Piping Design
Pipe Stress Analysis
Foundations
Structures (Steel, Concrete, Composite)
Buildings
Process Plants
Oil Refineries



Structural Steel Detailing

We offer steel detailing services to Fabricators, Contractors and Structural consultants engaged in steel fabrication and related activities.

Structural steel detailing is offered for Industrial Projects, Manufacturing Plants, Refinery & Petrochemical Projects, Power Plants, Offshore Platforms, Institutional Buildings, Technological Structures, Boiler Support Structure, Tower Projects, Pulp & Paper, etc.

The steel fabrication shop requires drawings for every piece of steel used on a structure. Accurate drawings used for fabrication enables the safe and proficient erection of a structure.

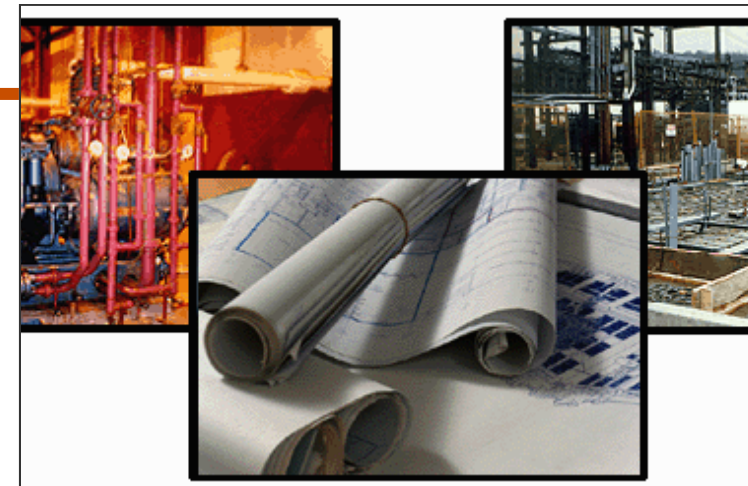
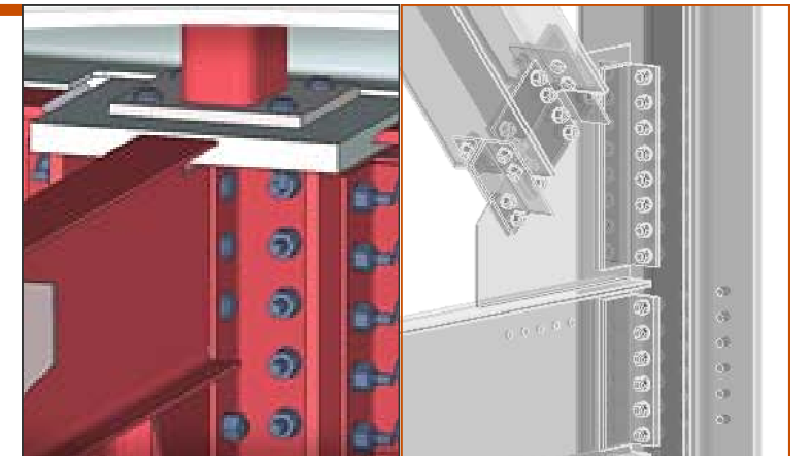
Connection Design

By utilizing the SDS/2 3/D modeling system, PSDESIGN can Incorporate:

- Allowable stress design (ASD)
- Load and resistance factor (LRFD)
- SI metric units
- Nonstandard shapes
- Special design methods

We provide structural steel connection design services for:

- Architectural Engineering firms
- Steel detailing companies
- Contractors
- Structural steel fabricators



The Collaborative Approach

Reduce Overall Costs

Allows for assistance in determining framing layouts, member selection, and connection details that are friendly to both fabricator and erector, resulting in reduced shop and field labor costs.

Provides for closer coordination with supplier and steel mills regarding shop availability (also has schedule implications).

Creates a working relationship between detailer and engineer for design forces, leading to more economical connection design.

Results in fewer man-hours expended by detailers developing RFI's and engineer responding to them (also has schedule implications)

Enhanced Quality of Work

A portion of the schedule improvement could translate into extended engineering time for further checking and refinement of design' electronic Data Interchange dramatically reduces the potential for errors.

Early detailer review of the design drawings will minimize omission of necessary information. The working relationship it creates between detailer and engineer will eliminate guesswork regarding the engineer's intent.